

# iPECS-Terminals

August 2008

A decorative graphic consisting of a 3x3 grid of squares, with each square further divided into a 3x3 sub-grid, creating a total of 81 small squares. The squares are arranged in a staggered pattern.

# Index

## **Hard Terminals**

- >LIP-8000
- >WIT-300HE
- >GDC-400H

## **Soft Clients**

- >Phontage Basic, PDA, Deluxe
- >Web Phone

A decorative graphic consisting of a grid of small squares, arranged in four rows of three, located in the upper left quadrant of the slide.

## **Hard Terminals**

>LIP-8000

>WIT-300HE

>GDC-400H

## **Soft Clients**

>Phontage Basic, PDA, Deluxe

>Web Phone

A decorative graphic consisting of a grid of small squares, arranged in four rows of three, located in the lower right quadrant of the slide.

## □ Communications tools enriching the human experience

- >User centric design & features
- >Business communication environment enhancement
- >Multiple choice of business terminals from entry to professional
- >High quality voice communication



# LIP-8000 Line Up

□ Choice of IP phones for all business segments



LIP-8012LSS  
LCD underlay



LIP-8012DSS/48DSS  
Paper underlay



LIP-8000BTMU



Professional  
LIP-8024D



Executive  
LIP-8040L



Standard  
LIP-8012D



Simple Entry  
LIP-8004D

## □ Simple features for a entry level usage & the most affordable IP telephone

### Target users

The LIP-8004 Phone is specifically designed for occasional users. It is also an affordable choice for common areas.

- . None communications-intensive office users
- . Reception lobbies and meeting areas
- . Manufacturing and retail floors



### Key benefits

- . Affordable price offering for massive deploy
- . Simple to use features with fixed keys
- . User programmable 4 feature keys
- . Incoming CID & time display
- . Robust keyset designed for everyday usage
- . Automatic firmware upgrade from central system
- . Wall mountable without additional bracket
- . Single infrastructure over the network (Remote or local installation)
- . No external power supply required (802.3 af standard PoE supported)

*\*External power adaptor provided optionally*



## >Interface

- . 1 LAN (10/100 BASE T)
- . 4 Programmable buttons
- . POE(802.3af) or Local power feeding
- . Fixed feature keys
  - DND, Speed, Volume Up/Down, Trans/Pgm, Hold/Save, Call back, OHD
- . Message Waiting Indication lamp

## >Display

- . 1 Line LCD (1 \* 16 Character)
- . English or Local language display

## >IP Telephony

- . LG-Nortel iPECS Protocol
- . Multiple codec support(G.711,723,729)
- . Echo cancellation (VAD/CNG)
- . Static/DHCP IP address
- . QoS
  - Dynamic jitter buffering,
  - 802.1P/Q, Layer 3 TOS, Diffserv
- . TLS W/AES-128 SRTP W/AES-128 Security

## >Features

- . Speed dialing, Redialing
- . Call holding
- . Call waiting
- . Call park/Call pick up
- . Call forwarding
- . Conferencing call
- . Volume up/down control
- . Caller ID
- . Distinctive ring/Multi-ring
- . Multi-lines
- . And full system features

## □ Everyday use business desktop IP phone provides the perfect combination of features and performance

### Target users

Users have convenient single button access to call conferencing, call transferring, redial and call log lists with 12 programmable features Key.

- . Most office workers
- . Home office users

### Key benefits

- . Standard business IP phone
- . Everyday use features with navigation keys
- . User programmable 12 feature keys
- . Enhanced quality conference call
- . Context sensitive 3 softkeys
- . High quality voice communication
- . 2nd hub port for PC connection
- . Professional headset integration via RJ11



*\*External power adaptor provided optionally*





## >Interface

- . 2 LAN (10/100 BASE T)
- . 12 Programmable buttons
- . 3 Soft keys
- . Fixed feature keys
  - DND, Headset, Volume Up/Down, Trans/Pgm, Hold/Save, Mute, Speaker
  - Navigation, Menu, Message
- . Message Waiting Indication lamp
- . Hands-free microphone
- . POE(802.3af) or Local power feeding

## >IP Telephony

- . LG-Nortel iPECS Protocol
- . Multiple codec support(G.711,723,729 & 722\*)
- . Echo cancellation (VAD/CNG)
- . Static/DHCP IP address
- . QoS
  - Dynamic jitter buffering,
  - 802.1P/Q, Layer 3 TOS, Diffserv
- . TLS W/AES-128 SRTP W/AES-128 Security

## >Display

- . 3 Line LCD (240 \* 42, Gray scale graphic)
- . White Backlit
- . English or Local language display

## >Features

- . Speed dialing, Redialing
- . Call holding
- . Call waiting
- . Call park/Call pick up
- . Call forwarding
- . Conferencing call
- . Volume up/down control
- . Caller ID
- . Distinctive ring/Multi-ring
- . Multi-lines
- . Direct mail/ Messaging access
- . Directory / Phone book
- . And full system features

*\*Must be installed in same LAN for G.722 connection*

## □ Professional IP Desktop to address the needs of managers or answering positions

### Target users

Ideal for general office and knowledge-worker environments. Powerful business telephone with reliable functionalities with 24 programmable features keys.

- . **Managers**
- . **Answering position workers (Receptionists, Assistants)**

### Key benefits

- . Professional usage IP phone
- . User programmable 24 feature keys
- . Bluetooth headset integration with optional Bluetooth module
- . More extension user information handling with optional DSS
- . BLF information with triple color LED
- . More informative display with feature icons





## >Interface

- . 2 LAN(10/100 BASE T)
- . 24 Programmable buttons
- . 3 Soft keys
- . Fixed feature keys
  - DND, Headset, Volume Up/Down, Trans/Pgm, Hold/Save, Mute, Speaker
  - Navigation, Menu, Message
- . Message Waiting Indication lamp
- . Hands-free microphone
- . POE(802.3af) or Local power feeding
- . Optional Blue-tooth module

## >IP Telephony

- . LG-Nortel iPECS Protocol
- . Multiple codec support(G.711,723,729 & 722\*)
- . Echo cancellation [VAD/CNG]
- . Static/DHCP IP address
- . QoS
  - Dynamic jitter buffering,
  - 802.1P/Q, Layer 3 TOS, Diffserv
- . TLS W/AES-128 SRTP W/AES-128 Security

## >Display

- . 4 Line LCD (240 \* 56, Gray scale graphic)
- . White Backlit
- . English or Local language display

## >Features

- . Speed dialing, Redialing
- . Call holding
- . Call waiting
- . Call park/Call pick up
- . Call forwarding
- . Conferencing call
- . Volume up/down control
- . Caller ID
- . Distinctive ring/Multi-ring
- . Multi-lines
- . Direct mail/ Messaging access
- . Directory / Phone book
- . And full system features

*\*Must be installed in same LAN for G.722 connection*

## Executive IP Desktop with informative large display and exclusive design

### Target users

Designed to appeal to both executive users who require advanced features and applications, and telephone attendants who need multiple line support and enhanced call handling capabilities.

- . Executives
- . Knowledge workers

### Key benefits

- . Informative large LCD display
- . User programmable 10 feature keys with LCD underlay
- . Exclusively designed for executives
- . More extension user information handling with optional LCD type DSS



## >Interface

- . 2 LAN(10/100 BASE T)
- . 10 Programmable buttons w/ LCD underlay
- . 3 Soft keys
- . Fixed feature keys
  - DND, Headset, Volume Up/Down, Trans/Pgm, Hold/Save, Mute, Speaker
  - Navigation, Menu, Message
- . Message Waiting Indication lamp
- . Hands-free microphone
- . POE(802.3af) or Local power feeding
- . Optional Blue-tooth module

## >IP Telephony

- . LG-Nortel iPECS Protocol
- . Multiple codec support(G.711,723,729 & 722\*)
- . Echo cancellation [VAD/CNG]
- . Static/DHCP IP address
- . QoS
  - Dynamic jitter buffering,
  - 802.1P/Q, Layer 3 TOS, Diffserv
- . TLS W/AES-128 SRTP W/AES-128 Security

## >Display

- . 9 Line LCD (240 \* 144, Gray scale graphic)
- . White Backlit
- . English or Local language display

## >Features

- . Speed dialing, Redialing
- . Call holding
- . Call waiting
- . Call park/Call pick up
- . Call forwarding
- . Conferencing call
- . Volume up/down control
- . Caller ID
- . Distinctive ring/Multi-ring
- . Multi-lines
- . Direct mail/ Messaging access
- . Directory / Phone book
- . And full system features

*\*Must be installed in same LAN for G.722 connection*

## □ Expand your phone capacity with fully interactive with intuitive features and slick styling



**LIP-8012DSS**

- 12 Flexible Buttons with 3-color LED
- 12-pin flat cable to main keyset
- Connect up to 2 units per keyset
- Paper underlay

### Physical Specifications

Dimensions: 95x55x205 (mm) [W x D x H]

Weight: 290g

Operating temperature: 0~40 degree Celsius

Relative humidity: 10~85% non-condensing

Storage temperature: -10~60 degree Celsius

Certification: UL/FCC/CE/MIC



**LIP-8012LSS**

- 12 Flexible Buttons with 3-color LED
- Minimum 10 char x 12 line LCD
- Connect up to 2 units per keyset
- 12-pin flat cable to main keyset

### LCD

View Area: 52x95 (mm) [W x H]

Grey-scale 179x124 resolution (Backlight FSTN )

### Physical Specifications

Dimensions: 95x55x205 (mm) [W x D x H]

Weight : 350g

Operating temperature: 0~40 degree Celsius

Relative humidity: 10~85% non-condensing

Storage temperature: -10~60 degree Celsius

Certification: UL/FCC/CE/MIC

## □ Expand your phone capacity with fully interactive with intuitive features and slick styling



**LIP-8048DSS**

- 48 Flexible Buttons with 3-color LED
- 12-pin Flat Cable to Main set
- Connect up to 4 units per keyset
- Paper underlay

### Physical Specifications

Dimensions: 95x55x205 (mm) [W x D x H]

Weight: 343g

Operating temperature: 0~40 degree Celsius

Relative humidity: 10~85% non-condensing

Storage temperature: -10~60 degree Celsius

Certification: UL/FCC/CE/MIC



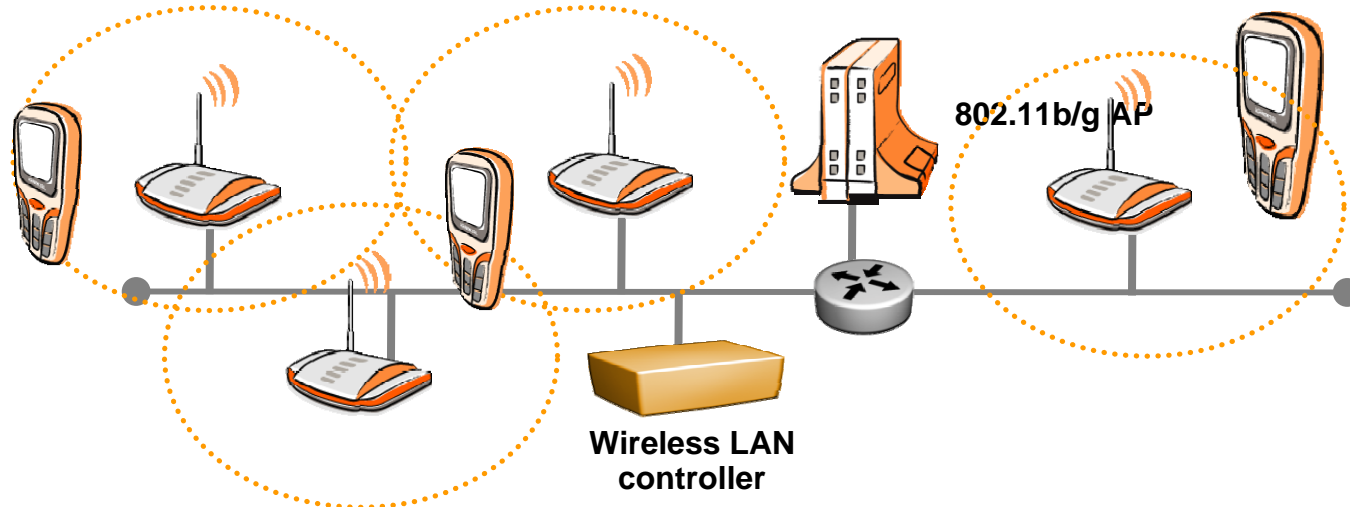
**LIP-8000BTMU**

- Bluetooth headset profile support
- Class 2 (4dBm Max) Bluetooth Module adapted
- Bluetooth compliant: Bluetooth 2.0
- Up to 10 meters(30 feet) range\*
- Application features\* : Call answer/end,  
Volume control,  
Audio connection transfer

\* Depends on the user's equipment and work environment.

## □ Cutting edge business mobility solution

- >IP-centric single infrastructure with easier moves, adds, changes
- >On the road mobility
- >Plug n Play single cell users
  - . Typical remote phone solution
  - . Industry standard 802.11b/g AP
- >Multi cell environment with seamless handover
  - . Wireless LAN controller recommended for seamless handover
  - . Business grade AP for robust system connection during handover
    - : Cisco Aironet 1200 series recommended





## □ Full feature system Wireless IP Phone

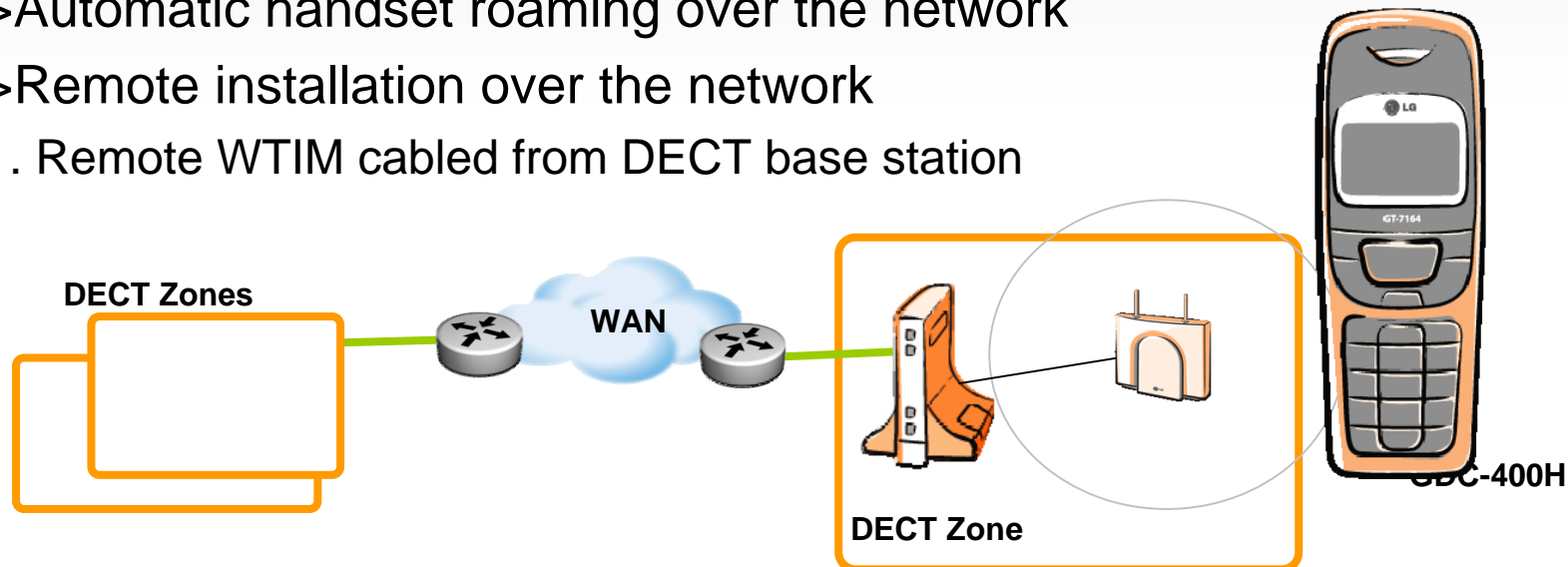
- > Full system feature supported
  - . Fixed feature keys : Hold/Save, Trans/PGM
  - . Soft menu keys and flexible button assignment
- > 802.11b/g compatible
- > User friendly GUI with 1.5" 65K CSTN color LCD
- > Standby time 40hrs / Talk time 3.5hrs
- > WEP 64 & 128 bit password encryption
- > 2.5mm ear mike jack



Target customer	Key benefits
<ul style="list-style-type: none"><li>. Road warriors</li><li>. Home office</li><li>. Field workers</li><li>. Warehouse</li></ul>	<ul style="list-style-type: none"><li>. In house &amp; on the road mobility</li><li>. Leveraging single infrastructure</li><li>. Plug n play installation</li><li>. Common use of AP</li></ul>

## □ Cost effective mobility solution

- > Full system feature supported DECT terminal
- > Traditional DECT technology over network
  - . IP to DECT base wireless GW & controller (WTIM)
  - . Using existing DECT base (GDC-400B)
- > Cost effective by leveraging existing DECT infrastructure
- > Seamless handover within same zone
- > Automatic handset roaming over the network
- > Remote installation over the network
  - . Remote WTIM cabled from DECT base station



## □ User friendly system DECT handset

- > Mobile like user interface
  - . Easy menu access via navigation key and softkeys
  - . Feature rich 1.5" full color LCD
- > Multi language menu support
  - . English, Italian, Russian, Spanish
- > Differential ring tone up to 9 per external/internal
- > Vibrator & Ring LED
- > Backlit for LCD and keypad
- > Standby 150hrs / Talking 15 hrs
- > 2.5mm ear mike jack



Target customer	Key benefits
<ul style="list-style-type: none"><li>. Secretary</li><li>. Very small business</li><li>. Field workers</li><li>. Warehouse</li></ul>	<ul style="list-style-type: none"><li>. Cost effective mobility solution</li><li>. In house mobility</li><li>. Leveraging existing infrastructure</li><li>. Multi site mobility</li></ul>

A decorative graphic consisting of a 4x3 grid of squares, with the bottom row of squares partially obscured by the text.

## Hard Terminals

>LIP-8000

>WIT-300HE

>GDC-400H

## Soft Clients

>Phontage Basic, PDA, Deluxe

>Web Phone

A decorative graphic consisting of a 4x3 grid of squares, located at the bottom of the slide.

## What is Phontage?

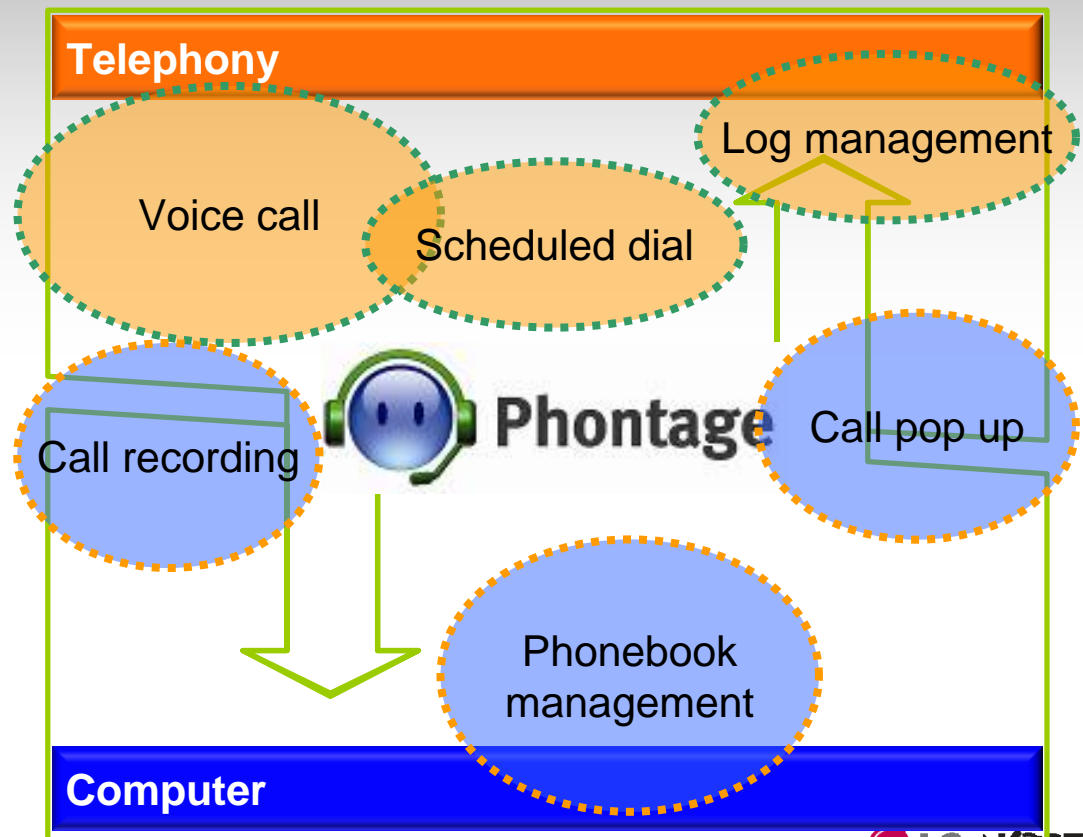
- >Phontage is NOT a CTI but more...
- >PC based virtual telephone with full system features
- >Perfect solution for home workers, road warriors & heavy dialers

### Target customers

- . Frequent business traveler
- . Home worker
- . Everyday heavy dialer
- . Wireless PC users
- . Mobile communicators

### Key benefits

- . Office extension wherever you go
- . Easier personal DB management
- . Productivity enhancement
- . Personal call recording service



## □ Variety of client types

- > Differentiation based on customer demand
  - . Basic version for frequent business travelers, heavy call handlers
  - . PDA users can run optimum mobile client
  - . Multimedia communication for remote/home workers
- > Simple license structure
  - . Concurrent client log in license
  - . Basic = PDA < Deluxe

### Desktop Basic

Full feature desktop softphone



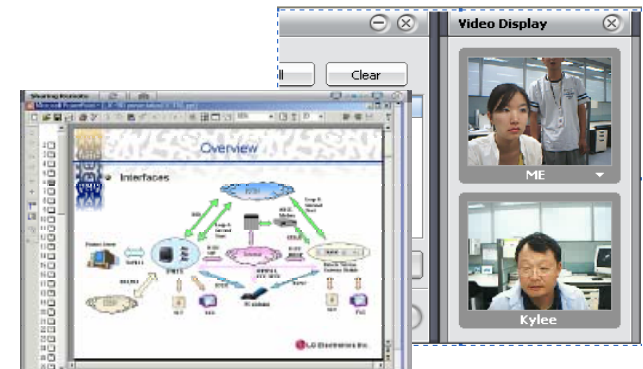
### PDA

Mobile communicator



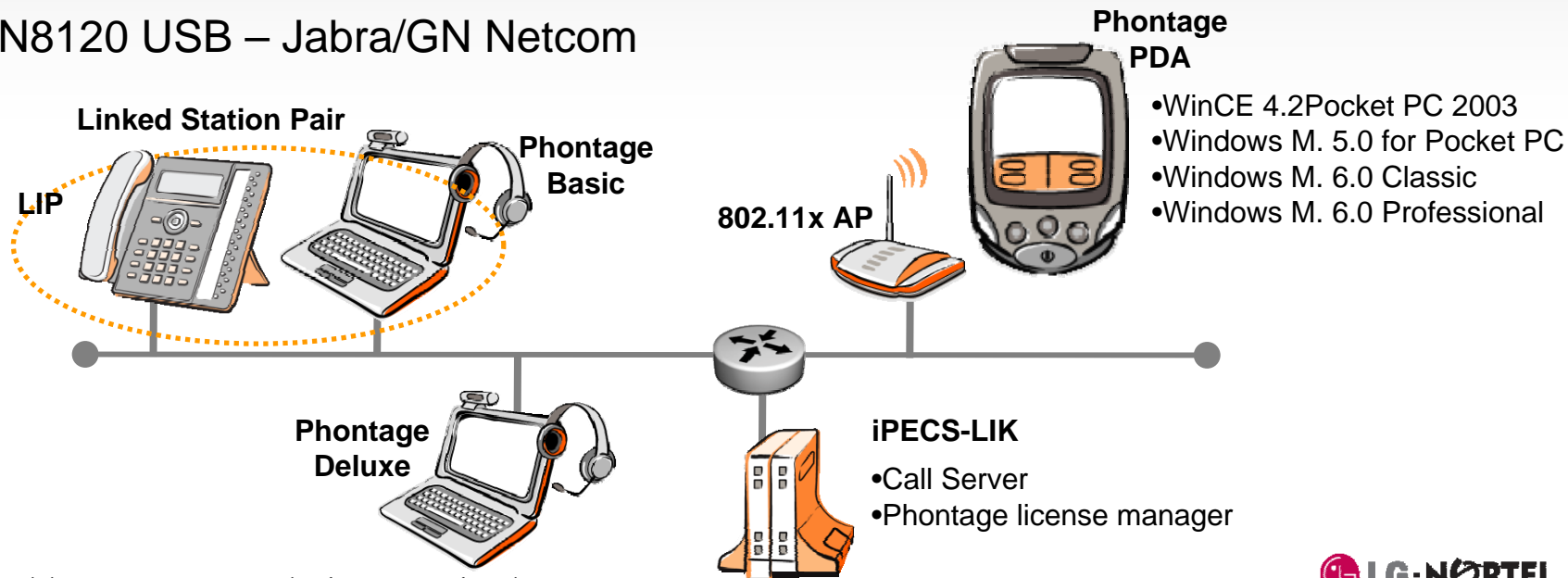
### Desktop Deluxe

Multimedia collaborations



## Robust voice communication tool

- >High voice quality engine GIPs
- >QoS w/ Echo cancellation, Noise suppression, Auto gain control
- >Multiple codec support : G.711& 729
- >English or Local language support\*
- >Wireless headset hook switch integration
  - . Audio910, CS50/60 USB – Plantronics
  - . GN8120 USB – Jabra/GN Netcom



\*Prior local language translation required

## □ Enhancing users calling experience

### >Easy to dial by name

- . Local directory base dialing by typing name
- . Dynamic DB search in main window

### >IP Bridge

- . Directory dialing from Client & Talking on Desktop Phone by lifting handset
- . To alternate CTI agent

### >24 Flexible Buttons

- . BLF information display & one click call pick up of colleagues

### >Internal & External SMS

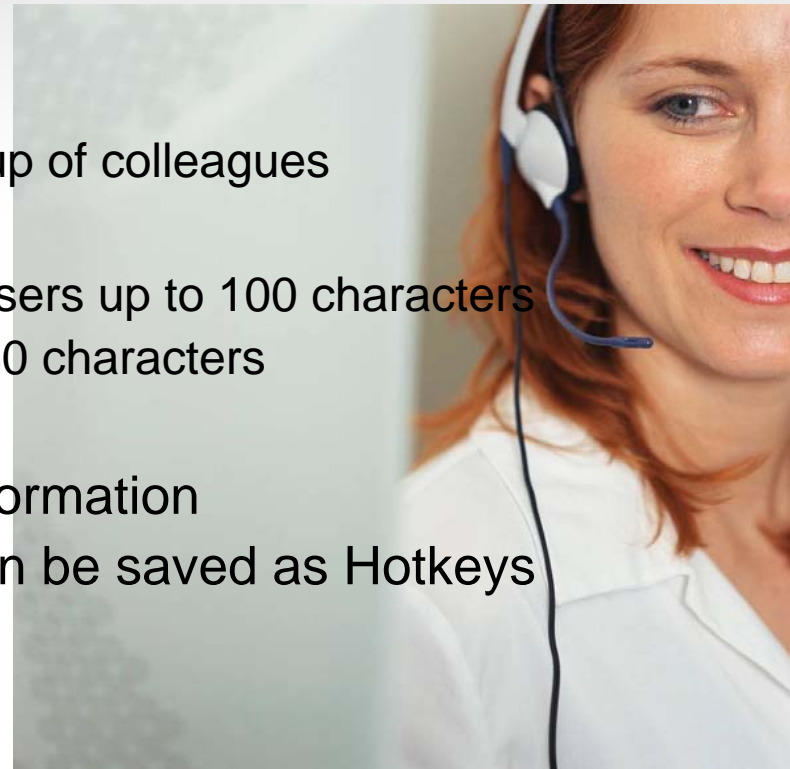
- . Quick text message sending tool to internal users up to 100 characters
- . External SMS\* using ETSI Type 1 & 2 up to 80 characters

### >On going call recording

### >Incoming Call Pop-up with caller's CID information

### >Up to 12 frequently used features keys can be saved as Hotkeys

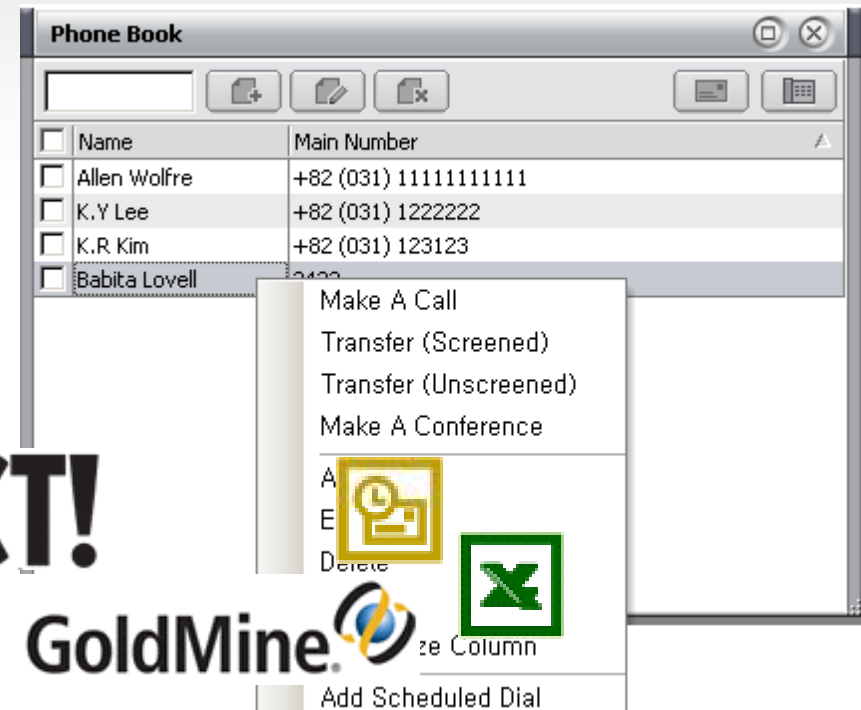
*\*Fixed line SMS setting in LGCM is required for external SMS*





## □ Easier personal DB management

- > Outlook scheduler synchronization
  - . Latest scheduler event update
- > Database Import/Export
  - . User can manually import/export DB into Outlook, Gold Mine, ACT! or Excel
- > Scheduled Dial and Notification
  - . Dialing schedule management
  - . Confirmation pop up before dialing
- > Phone book & Call Log management
  - . Direct click to call from phone book
  - . Easy to duplicate from activity log



## □ User friendly interface

### >Smart Tray Icon & Menu

- . Icon display in system tray with interactive pop up menu

### >Quick Call Menu & Dial pad pop up

- . Direct dialing or DB search in single window
- . Pop up dial pad for DTMF signaling

### >Audio Tuning Wizard & Hook Switch Setting

- . Phontage reads PC's sound card drivers for user selection

### >Station call forward setting

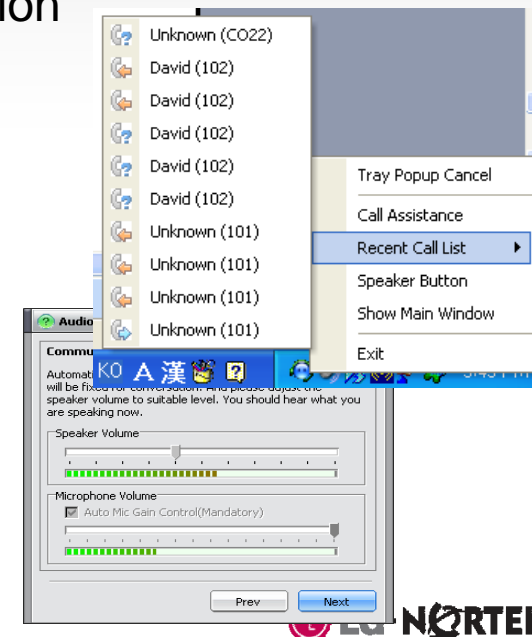
- . Unconditional, Busy, No Answer & Busy No Answer

### >Clock or Calendar mode display in main window

### >Frequent contact list management

### >Multiple user connection profiles

### >Multi-language support : English or Local language



## □ Phontage for multimedia communication

### >Video conference

- . High quality video transmission (QCIF 176x144)
- . Up to 3 party peer to peer conference
- . User can adjust frame transmission rate based on network condition
- . Video data transmission control (Send/Stop)

### >Conference room management

- . User can book/delete conference room & send email invitation
- . Room status monitoring including # of participants

### >Conference group call initiation

- . Multiple called party selection and dialing

### >Peer to peer application sharing

- . Prior call connection set up required

### >Instant Messaging

- . Users can chat during voice call connection



## Value adding features

### >LDAP Search

- . Company LDAP server access & search by name
- . Click to call from the list

### >3rd party call recording

- . User can assign 3<sup>rd</sup> party system terminal for automatic call recording
- . Phontage must be on during the recording

### >Call assistance

- . Always on top transparent dialing window
- . Dynamic DB search, Direct number dialing & LCD display option

### >Voice Mail Backup and Management

- . Users or other system users' VM can be saved via Phontage\*

*\*Phontage must be logged in as local mode*

## □ Phontage for mobile communicators

### >Robust mobile telephone

- . High voice quality engine GIPs
- . Multiple codec support : G.711 & 729
- . Echo cancellation, Noise suppression, Auto gain control

### >Latest mobile OS support

- . Windows M. 6.0 Classic & Professional

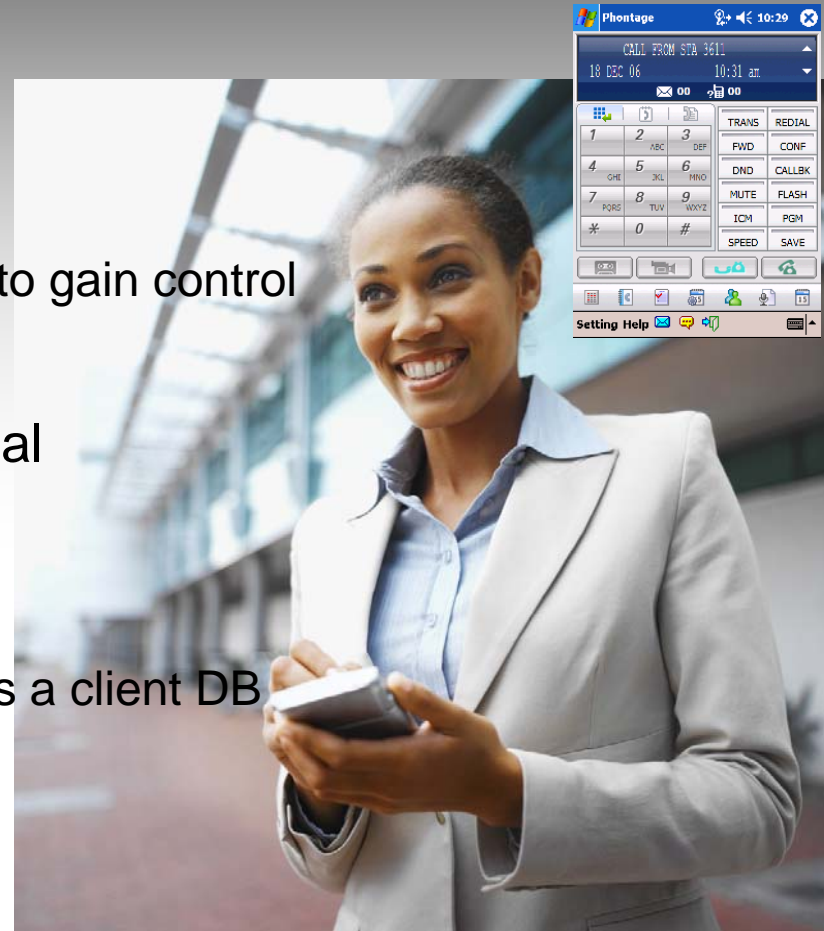
### >System feature keys

### >Automatic database synchronization

- . Phontage also uses Pocket Outlook DB as a client DB

### >On going call recording

### >Other Phontage Basic features



## □ Compact web client using Active X control

- >Web base Active X control compact phone client
  - . IE 6.0 or later
- >Access via MFIM web admin from remote location
- >High voice quality engine GIPs
  - . Echo cancellation, Noise suppression, Jitter buffer control
- >12 fixed keys to reach system features
  - . TRANS, Redial, FWD, Conference etc.
- >Password encryption via TLS
- >Key pad dialing
- >Station information display on LCD window
- >Hold and Speaker
- >Audio control panel
  - . Sound card control for speaker & microphone

